



US Army Corps  
of Engineers  
New York District

## 96 PARK WAY, ROCHELLE PARK, NJ SUMMARY FACT SHEET – October 2016



This is an information summary about environmental cleanup activities at 96 Park Way, Rochelle Park under the federal government's Formerly Utilized Sites Remedial Action Program (FUSRAP). FUSRAP is managed by the U.S. Army Corps of Engineers (USACE) and addresses waste generated by atomic research and production during the 1940s, 1950s, and 1960s. The waste was originally generated at a plant known as the Maywood Chemical Works and consisted primarily of a low-level naturally occurring radioactive material called thorium. The map on the reverse side locates the 96 Park Way property and the former Maywood Chemical Works site.

### PAST FUSRAP ACTIONS

- Approximately 14,000 cubic yards of contaminated soil was excavated from 96 Park Way in 1984 by the Department of Energy. The soil was ultimately disposed of at a licensed offsite facility. Soil sampling performed after the excavation indicated that the cleanup met the applicable guidelines in place at the time.
- A 2009 U.S. Environmental Protection Agency *Five-Year Review* of the FUSRAP Maywood Site found that 96 Park Way did not meet the current residential cleanup levels for the site and recommended additional study. The current levels are established in the approved cleanup plan for the Maywood Site (known as the Record of Decision) issued in 2003. Based on EPA's recommendation, USACE carefully reviewed all available records for the property. The review considered the differences between the soil cleanup standards used in the 1980s and the current standards, which are slightly more restrictive for deeper soils. Through that process, it was determined that more information about 96 Park Way was needed to confirm compliance with these stricter standards.
- The USACE conducted detailed field studies at 96 Park Way in 2014-15. This work included soil sampling to depths of 12 feet. The results identified three discrete areas at depth that do not meet the current residential cleanup standard: two areas bordering Route 17 and one along the adjacent railroad tracks.

### CURRENT CONDITIONS

The areas of concern are on the edge of the property, away from buildings and in lawn and parking areas with minimal use. Accordingly, the property is safe for workers, residents, and visitors under its current layout and use.

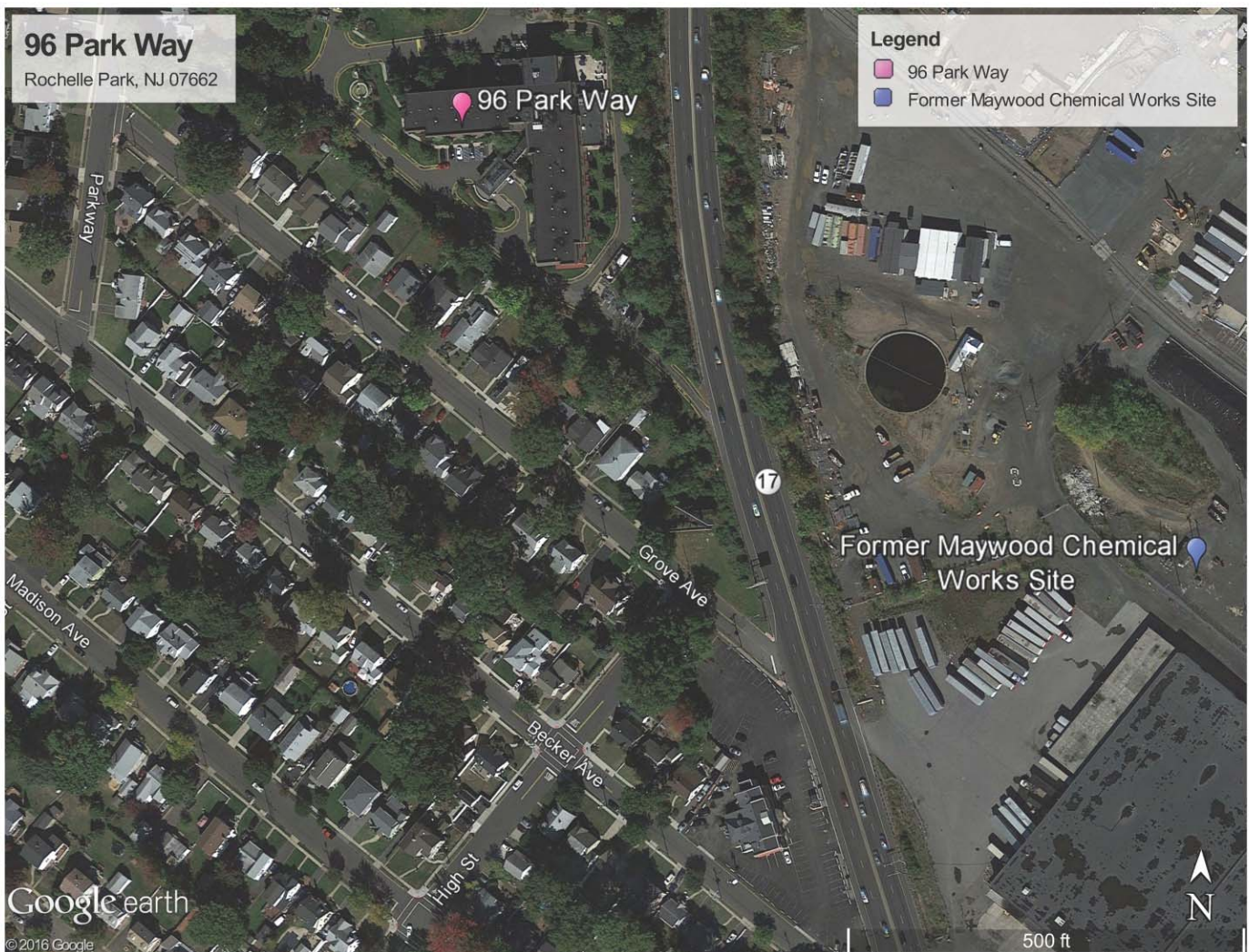
### PLANNED ACTIONS

USACE is planning to excavate and remove the contaminated soil from the three areas noted above. Soil will be transported to a licensed and/or permitted offsite disposal facility. This will eliminate potential exposure risks to workers who may have to dig in these areas in the future. Some key points about the project:

- **Safety** - Temporary fences will be installed to separate work zones from the rest of the property. Portions of the property not affected by this work will be used as normal. Dust suppression measures such as hosing down excavations to keep soil moist will be used. Perimeter air monitors will also operate throughout the

project to track dust emissions. Trucks and other equipment will be surveyed and decontaminated as needed prior to leaving the site. Noise monitoring will be conducted to ensure compliance with local codes.

- **Timing** - The work is scheduled to begin on or about October 24. It will be done in phases to limit disruptions to the property. Based on the current knowledge of the extent of contamination, estimated completion is May 2017. Work hours will be from 7 a.m. to 5 p.m. Monday to Friday. The project will break for two weeks around the holiday season.
- **Benefits** - This action is intended to bring 96 Park Way into compliance with current residential cleanup standards. The property owners would not be limited in future development or use of the property and resulting future workers and residents will be protected.
- **Coordination** - All work has been coordinated with the EPA and property management. All disturbed areas will be restored to their current condition. The work will take approximately 60 parking spaces out of service at various times. Alternate parking space at an offsite location will be used during these times. This may result in increased traffic on surrounding streets. Workers on this project will not use street parking at any time.



Questions or more information, please contact:

Jim Moore, USACE Project Manager, 917-790-8230

[james.t.moore@usace.army.mil](mailto:james.t.moore@usace.army.mil)

[www.fusrapmaywood.com](http://www.fusrapmaywood.com)

# 96 Park Way

Rochelle Park 07662, NJ

## Legend

↪ 96 Park Way

Remedial Excavation  
Areas (Approximate)

↪ 96 Park Way

Grove Ave

